

# Nuclear PLM Project : EDF Reference Data Library position (In partnership with Vinci Consulting)



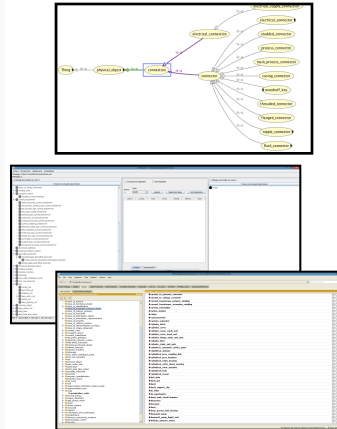
## Context and need

EDF has translated its internal conceptual data model to be compliant with ISO 15926

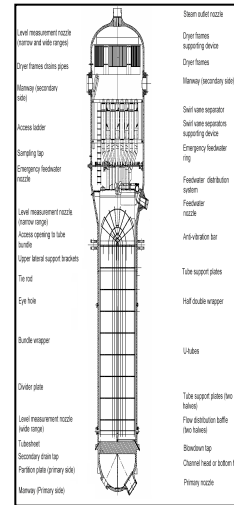
The result is a Reference Data Library (RDL) of EDF compliant with ISO 15926-2

EDF wished to position this private RDL with ISO 15926-4 and with other RDLs. The goal is to propose evolutions of the international norm to take into account the business needs of EDF

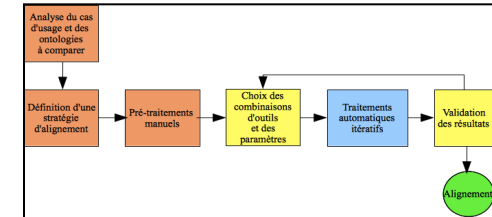
Use of different open source semantic tools for analysis and comparison



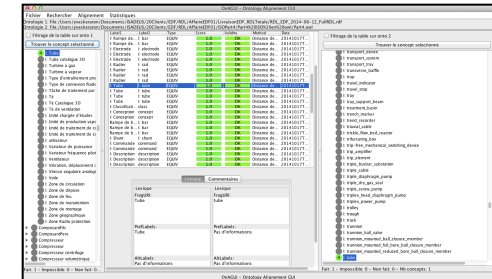
Heat Exchanger Generic Process Use Case



Generic Process of Comparison of RDLs



Use of an automatic alignment system



Results (Mission from mid-September to end-December 2014)

Analysis of the EDF conceptual data model

Comparison of the private RDL of EDF with the ISO 15926-4 and with the RDL of Posc Caesar Association.

Definition and tuning of a generic comparison process using an automatic alignment system

Focus on a business case (Exchange of data around a main equipment) to identify the coverage of the business needs of EDF by the current norm

Recommendations to make EDF proposals eligible for normalization